



education learning  
learning education  
training school  
education learning  
learning training  
education school  
learning education

FIND  
OUT  
MORE ►



**PARCO**  
**MOUNT GUIDE INTERNATIONAL**  
*A different Schooling*

(Affiliated to CBSE, New Delhi. Affin No-931015)  
(An ISO 9001: 2008 Certified Institution)

[www.mountguideinternational.org](http://www.mountguideinternational.org)



# MOUNT GUIDE INTERNATIONAL™

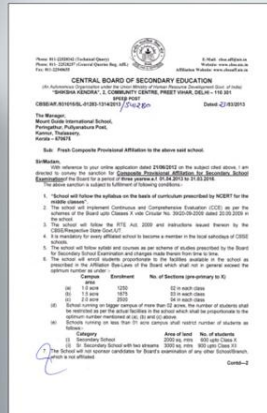
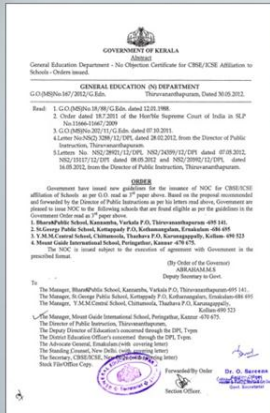
*A different Schooling*

(Affiliated to CBSE, New Delhi. Affln No-931015)  
(An ISO 9001: 2008 Certified Institution)

NOC by  
Govt of kerala

Affiliated to CBSE  
New Delhi

Minority Status by  
Govt of India





**P.A. RAHMAN**  
(Chairman)

## » Read in the name of thy Lord

Thus was the first ever revelation for Prophet Muhammed (PBUH). God created man out of a clot of congealed blood but blessed him with the abilities to read and to 'use the pen' and hence guided him to the glorious path of righteousness. Education is not merely a process of earning knowledge and developing skills. It shall ensure the all round development of children and include the all-inclusive human goodness

PARCO Educational Trust is committed to touch the correct note by harmonizing the spiritual with the material, the worldly with the innate goodness of man





Amalgamating the richest traditional values with the highest academic standards and the most modern techniques, **MOUNT GUIDE INTERNATIONAL** has been guiding its youngsters to the realms of the most valuable and dependable knowledge and wisdom. The campus offers the most up to date internationally acceptable air conditioned infrastructure. Intimate individual attention to students is ensured by admitting optimum number of students and regularly alerting the staff-concerned.



## VISION

The Vision of MOUNT GUIDE is not merely to impart the most modern and efficient education to all but to be the trend setter for the generation to come. MOUNT GUIDE envisages retaining the long cherished merits of the local tradition and guiding the budding youngsters of the society through an infallible system of education to the forefront of the modern era.

## MISSION

MOUNT GUIDE aims at igniting the young minds with enthusiasm and creating in them a passion for learning. We enable our students to grow into personalities of distinction supporting themselves, their families, the community and the society.

## QUALITY POLICY

We are committed to provide a high Quality education to every individual student using modern methods and amenities in a highly acceptable infrastructure ensuring a comfortable and competent process of physical, psychological and cultural development through continual improvement.







## THE MISSION WILL BE ACHIEVED BY

- Providing outstanding academic and co curricular facilities
- A quality supportive patnership between parents and the academy
- The implementation of exemplary teaching and learning programmes
- Fostering a strong sense of individual and community responsibility and self confidence
- Cultivating a life long appreciation of learning, resourcefulness and individual potential
- promoting ethical and moral conduct while respecting cultural diversity and individual differences
- Providing broad-based, integrated, experiential learning in basic academic disciplines in  
preparation of higher learning
- Providing leadership opportunities

Child is not a  
vase to be  
filled but  
a lamp to  
be lit.

## TEACHING METHODOLOGY

At Mount Guide we provide education with an objective to empower students to make decisions, to find creative solutions and plan effective action strategies. We believe that The curriculum is structured in a manner that keeps the children in touch with the ever -changing world trends, right from the Kindergarden to the senior level.



We constantly revamp, reinvent and evaluate the classroom and teaching strategy to create the most appropriate education that the children deserve. The study programme for all learning levels is unique because it is a cross -fertilization of the finest teaching methodologies.





# THE PRE PRIMARY LEVEL



## KINDERGARTEN

- ✦ Learning is made interesting, Funny and activity oriented at this level
- ✦ Participation of the students is encouraged through Montessori Method
- ✦ Poems And Stories are dramatized using expressive action and audio visual aids
- ✦ Children learn to comprehend through a multi sensory approach as concepts in Number Work, English & E.V.S. are made clear with the use of multimedia and Montessori Methods
- ✦ Regular Education Tour and Field Trips develop a sense of belonging to the world





## PRIMARY

- An extensive use of technology aids to supplement classroom teaching.
- Innumerable learning tools enhancing general awareness.
- Project works in class call for mass participation. An equal emphasis is laid on developing a strong sense of individuality.
- Field trip and excursion make learning a pleasurable enjoyment catering to effective learning.
- In higher classes learning is research oriented and based on team work to acquire in depth conceptual knowledge.
- Each Child is assessed through Continuous and Comprehensive Evaluation.
- Students work in groups and personality development, value education and coping with peer pressure are stressed

## SECONDARY

- Our efforts are to reach the pinnacle of expectations of CBSE.
- Like Lower classes a meticulously designed programme ensuring altruistic discipline and exemplary academic achievement is introduced.
- Strong involvement of students is confirmed by project work, field trips, excursions, debate and such other activities.
- Several model examinations and class tests are arranged to give sufficient practice to students.
- As and when necessary, we communicate with parents and make sure of the relevant support in the studies of students.

## GUIDANCE & COUNSELLING



**THE CAREER GUIDANCE AND COUNSELLING CENTER AT MOUNT GUIDE CREATES AWARENESS AMONG STUDENTS, OF THE VARIED CAREER OPTIONS AVAILABLE TO THEM AND PROVIDES PSYCHOLOGICAL AND EMOTIONAL SUPPORT.**

A professional counsellor is available during the school working hours to assist students and teachers alike.

The Counselling cell assists students in learning difficulties, behavioural development, adjustment problems, self awareness and stress management

A practical assistance and soft skill training provided by the counsellor helps the students to bridge the gap that exists in the protected school life and the world outside.

## HOUSE SYSTEM

The students of the school are allotted to four houses, i.e **Topaz**, **Sapphire**, **Ruby** & **Emerald**. The house system is an integral part of the school and helps to co-ordinate various activities in the corporate life and leads to build up a spirit of healthy competition and comradeship







## THE PREFECTORIAL SYSTEM



The prefectorial system forms the backbone of life in a good school. The initiative and capabilities of individual students are continuously watched and those with inherent or cultivated leadership qualities are selected to the Prefects' Council. The students' affairs are managed by this Council headed by the school Captain and the Head Girl.





## CLUBS

We offer our students a wide variety of co-curricular activities such as Public Speaking, Debate and Dramatics, Creativity Workshops, Group Discussion, Eco Club, Quizzing, Astronomy, Classes in Music, Drawing, Painting Philately, Trekking, and even Cookery.

It is mandatory for each student at Mount Guide to be a part of at least one of the clubs. The club members meet on every Saturday afternoon.



## HEALTH & WELLNESS

Mount Guide International school health services are aimed at creating a safe and healthy environment for each student. Our goal is to provide an optimal, healthy environment for students to learn. This is achieved by a collaboration of the following elements of school health wing.

- First Aid ■ Health Screening ■ Health Education,
- Renowned Pediatricians for emergency care,
- Qualified nurse and well equipped nursing facilities.





CARING TODAY FOR A HEALTHIER TOMORROW



A well-balanced, wholesome and nutritious food, both vegetarian and non-vegetarian is provided at a richly furnished and comfortable mess hall



## PHYSICAL EDUCATION

The school aims to develop, control, co-ordination and mastery of the body learnt through action, sensation and observation. Opportunities are provided to grow and develop through

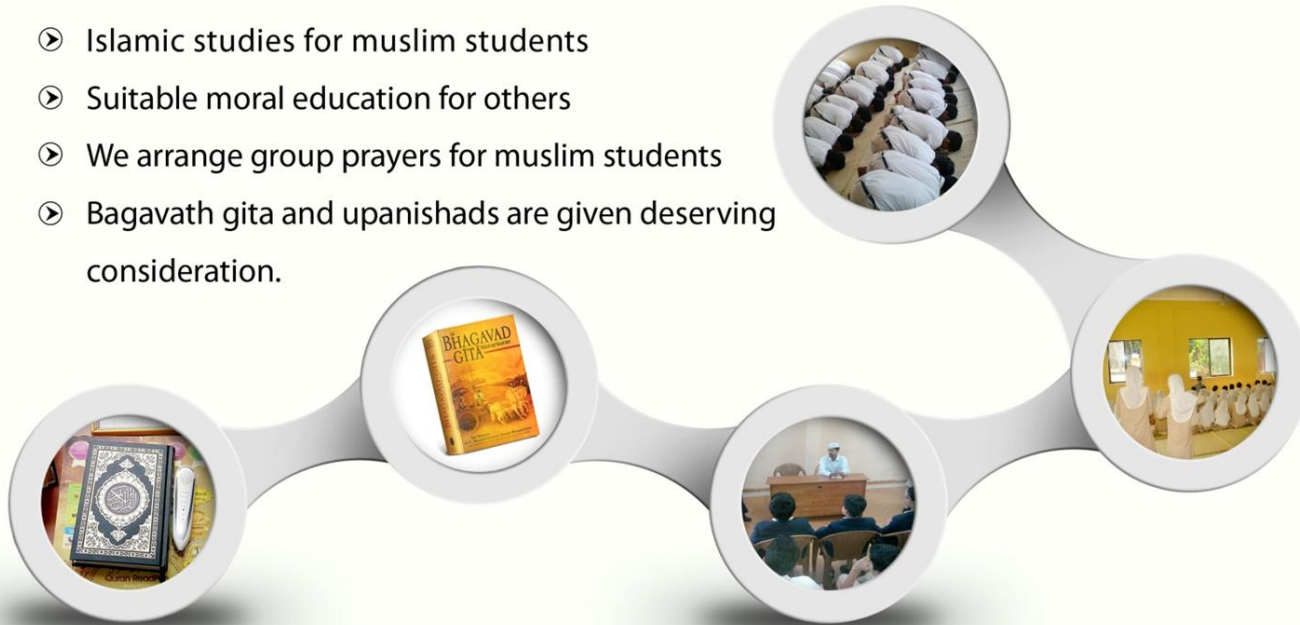
- ⚽ Games & athletics under qualified teachers. ⚽ Outdoor and Indoor activities
- ⚽ Special coaching in Taekwondo, Karate, Gymnastics, Yoga, Table Tennis, Badminton etc.



# moral education

We believe moral education is a fundamental and integral part of education. Absence of religious realisation leads to communal follies and dangerous schisms. So we impart highly reliable moral education to all our students irrespective of caste, creed or colour

- Islamic studies for muslim students
- Suitable moral education for others
- We arrange group prayers for muslim students
- Bagavath gita and upanishads are given deserving consideration.







## PLATFORM FOR PARENTS

WE BELIEVE THAT PARENTS ARE PLAYING A VITAL AND IMPORTANT ROLE IN THE OVER ALL DEVELOPMENT OF THEIR WARDS



Regular parent teacher meetings. Training and awareness programme for parents in general and mothers in particular by experts. Regular feed back about the child to parent from teachers.

## PROFUSELY EQUIPPED SCIENCE LABS



## LEARNING AMENITIES CONGENIAL PHYSICAL SETTINGS

## NEW GENERATION COMPUTER LAB



## ABUNDANTLY ARRANGED LIBRARY



## SCHOOL TIMING



- ⌚ School Assembly 9:00 am
- ⌚ Academic session 09:15 am to 3:15 pm
- ⌚ Guided Learning / special coaching 3:15 pm to 3:45 pm
- ⌚ Closing Assembly 3.45 pm

## ADMISSION

The academic year commences in the month of June every year. Admission are open to Kindergarten standard only and other classes admission is on the vacancy of the seats available.

Application form can be obtained from the school office directly or from the website 

## TRANSPORT

Richly comfortable school vehicles are plying to the various parts of Kozhikode & Kannur districts to bring the students and take them back.

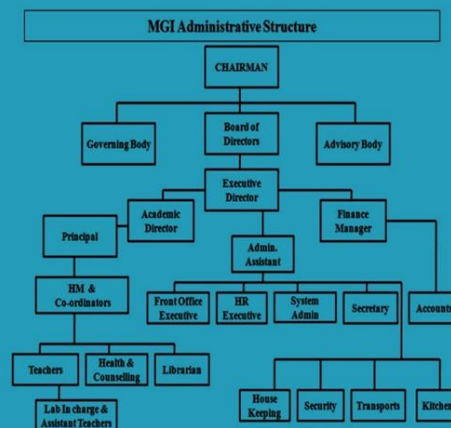




# MANAGEMENT

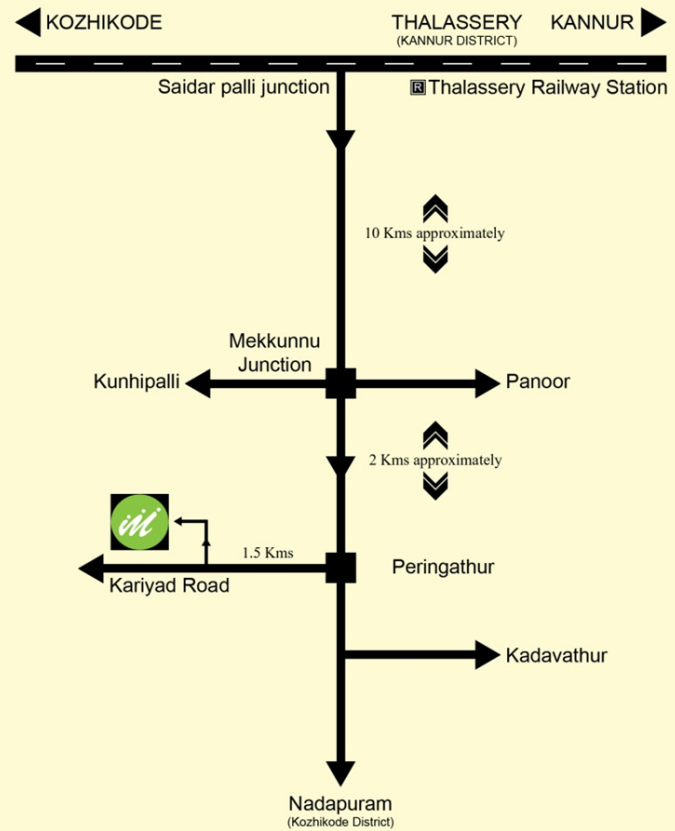
MOUNT GUIDE INTERNATIONAL SCHOOL IS RUN BY PARCO EDUCATIONAL TRUST

PARCO Group was formed as a result of the vision of Mr.P.Abdul Rahman, Chairman of the PARCO Group of companies,Late Mr.P.P Abdulla and Mr.P.P.Aboobacker the Group's Managing Directors. Over the last 38 years,Mr.P.Abdul Rahman, along with his brothers Mr P.P.Abdulla and Mr.P.P.Aboobacker,built successful and diverse business units with interests in Hospitality Retail, Manufacturing, Real Estate & Property Development Steel Factory,Contracting,Jewellery, Healthcare,Commodities Trading and General Trading. Educational institutions are not meant for profiteering but to provide internally the best possible education.



The Terms, Conditions and other details mentioned in this brochure are subject to modifications and variations at the discretion of the Management from time to time







## PARCO GROUP OF COMPANIES

**PARCO**  
*Value through excellence*  
**REFRIGERATION & KITCHEN  
EQUIPMENT FACTORY L.L.C.**  
[www.parco-me.com](http://www.parco-me.com)

**PARCO**  
HYPERMARKETS | SUPERMARKETS | DEPARTMENT STORES  
*To make you feel better*

**PARCO**  
*value through excellence*  
**EQUIPMENTS & FURNACE**  
[www.parcоеquipments.com](http://www.parcоеquipments.com)

**PARCO**  
**Mall**  
*Big Fun For Little Ones*  
[www.parcomall.com](http://www.parcomall.com)

**PARCO**  
**MIDDLE EAST LLC**

IMPORTERS | DISTRIBUTORS | WHOLESALE POINT

**PARCO**  
**RESTAURANTS | CATERING SERVICES**

  
 **MOUNT GUIDE  
INTERNATIONAL**  
*A different Schooling*  
(Affiliated to CBSE, New Delhi. Affin No-931015)  
(An ISO 9001: 2008 Certified Institution)

  
**PARCO**  
**INTERIORS L.L.C.**  
[www.parcointeriors.com](http://www.parcointeriors.com)

  
**PARCOHOSPITAL**  
[www.parcohospital.com](http://www.parcohospital.com)

  
**SWARNANJALI  
GOLD**  
BIS & ISO 9001: 2008 certified Jewellery group  
[www.parcogold.com](http://www.parcogold.com)

  
**parco**  
**RESIDENCY**  
— Hospitality, above all —

  
**PARCO  
GROUP**  
SINCE 1971

Head Office: P.O.Box : 2316, Dubai - UAE, Tel: +971 4 8818 507, Fax: +971 4 8818 508  
**UAE | QATAR | INDIA**



# MOUNT GUIDE INTERNATIONAL SCHOOL

PERINGATHUR, KANNUR KERALA, INDIA-670 675

PHONE: 0490-2397477, 2396877, 2397377

**BELIEVE  
BELONG  
BECOME**



<http://goo.gl/maps/UNcdL>



<http://twitter.com/mgischool>



[mountguideschool@gmail.com](mailto:mountguideschool@gmail.com)



<http://www.mountguideinternational.org>



<http://youtube/user/mountguideinternational>



<http://www.facebook.com/page/Mount-Guide-International/303708573079274>